

# EBSCO Health

Comprehensive  
Medical Solutions

**EBSCO**数据库介绍

——如何查找、下载及管理护理学外文文献

Chengfang Wang王成芳 |

EBSCO Training Specialist



课程结束时可参与抽奖

## 课程内容

第一部分： 数据库及资源简介

第二部分： 操作演示

第三部分： 支持网站&问答

## Cumulative Index to Nursing and Allied Health Literature

- 收录全球英文护理专业期刊，包括美国护理协会、国际护理联盟组织、护理卫生科学联盟组织及选录自生物医学 *Index Medicus* 中有关**护理文献资料**，共计约有 **5,500**多种期刊。
- 涉及卫生健康科学、心理学、行为科学、管理学等学科。
- 收录的护理文献**有逾2,700种为MEDLINE所没有收录的**；
- 并包括数百种护理全文文献，最早回溯至**1937**年
- 覆盖范围广阔，超过**600**万条记录
- 除期刊资源外，**CINAHL**数据库还提供护理学书籍，博硕士论文，精选会议论文集，实践标准，视听素材和书籍章节的索摘信息

# CINAHL Complete

- 提供CINAHL索摘中收录超过1300种护理和卫生相关期刊全文，出版物如*British Journal of Nursing*, *Contemporary Pediatrics*, *British Journal of Community Nursing*等，且皆无embargo（全文延迟）
- 主题涵盖: *nursing, biomedicine, health sciences librarianship, alternative/complementary medicine, consumer health and 17 allied health disciplines*
- 243种书籍专著、130多份循证护理说明、近170份快速教学、250多笔研究设备记录

# Active full-text, non-open access journals available in CINAHL Complete with NO embargo



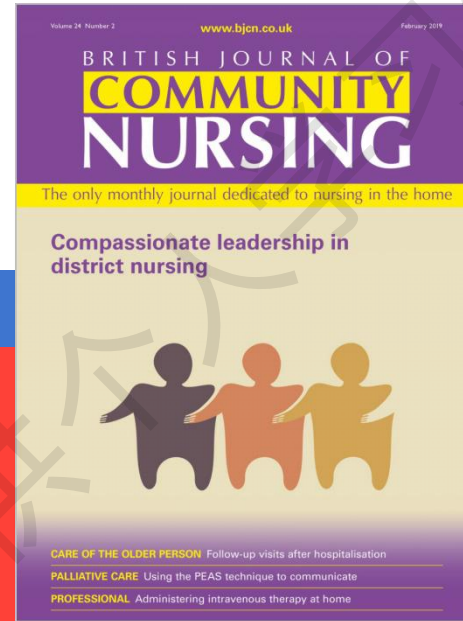
*American Journal of Critical Care*

美国重症监护杂志



*American Journal of Occupational Therapy*

美国职业治疗杂志



*British Journal of Community Nursing*

英国社区护理杂志



*British Journal of Midwifery*

英国助产学杂志



*British Journal of Nursing*

英国护理杂志

# Active full-text, non-open access journals available in CINAHL Complete with NO embargo



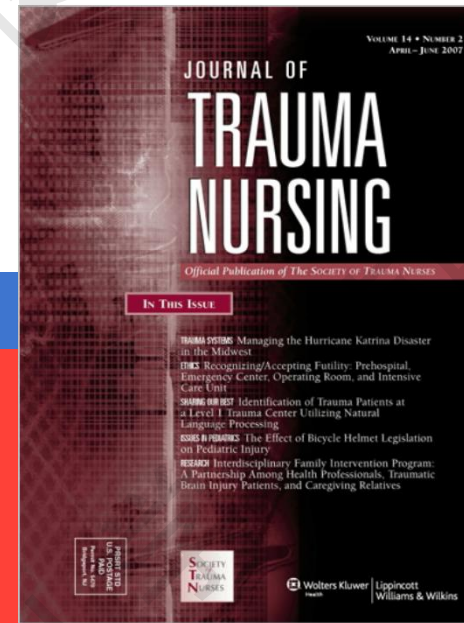
**Critical Care Nurse**  
重症护理护士



**Dermatological Nursing**  
皮肤护理



**Journal of School Nursing**  
学校护理杂志



**Journal of Trauma Nursing**  
创伤护理杂志



**Radiologic Technology**  
放射技术

# 收录由Mark Allen Health所发行的Internurse Collection专辑全部期刊

- 由Mark Allen Health所发行的Internurse Collection专辑包含护理学的主要资源和二级资源，内容涵盖护理专业各个领域，包括心脏病、神经科学、精神疾病、姑息治疗、创伤治疗等。
- Internurse Collection提供超过4万篇同行评审文献，每月还额外新增200篇文献。

\*\*\***Mark Allen Health**健康医疗公司是一家成立于英国的护理和医学教育提供商，为各级健康医疗专业人士提供专业的出版资源。其出版的高质量医学护理学术类期刊，在国际间受到广泛关注

# Internurse Collection 专辑

<b>British Journal of Cardiac Nursing</b>	<b>2052-2207</b>
<b>British Journal of Community Nursing</b>	2052-2215
<b>British Journal of Healthcare Assistants</b>	2052-4420
<b>British Journal of Mental Health Nursing</b>	2052-496X
<b>British Journal of Neuroscience Nursing</b>	2052-2800
<b>British Journal of Nursing</b>	2052-2819
<b>British Journal of School Nursing</b>	2052-2827
<b>Gastrointestinal Nursing</b>	2052-2835
<b>Independent Nurse Select*</b>	2052-2843
<b>International Journal of Palliative Nursing</b>	2052-286X
<b>Journal of Aesthetic Nursing</b>	2052-2878
<b>Journal of Health Visiting</b>	2052-2908
<b>Journal of Kidney Care</b>	2397-9542
<b>Journal of Wound Care</b>	2052-2916
<b>Nurse Prescribing</b>	2052-2924
<b>Nursing &amp; Residential Care</b>	2052-2932
<b>Practice Nursing</b>	2052-2940



## 第二部分：EBSCOhost如何助力您的科学研究？

### 一、开题、投稿、大论文

- 如何找文献
- 如何保存和分享文献
- 如何快速获取参考文献信息

### 二、个人知识积累

- 了解行业发展趋势
- 定期阅读个人感兴趣的期刊
- 听力辅助阅读文献，掌握专业学科外语词汇

有EBSCO陪伴，论文路上不孤单。

# 找文献——检索方法

## 检索文章

- 检索选项
- 关键词检索
- PICO检索
- 主题词检索

## 检索整刊

- 出版物

# 高级检索——关键词检索

## 运算符

运算符	说明	示例	备注
AND	用于缩小检索范围，类似于“交集”概念	<i>coffee AND tea</i> 检索到的结果中既包含 <i>coffee</i> 也包含 <i>tea</i> 。	运算优先级：() >NOT >AND >OR
OR	用于扩大检索范围，类似于“并集”概念	<i>college OR university</i> 检索的结果中或者包含 <i>college</i> ，或者包含 <i>university</i> 。	
NOT	用于排除检索结果中不需要的项，类似于“非”的概念	<i>Cookies NOT computer</i> 检索的结果只和 <i>Cookies</i> 相关，不包含 <i>computer</i> 。	
Near Operator (N)	查找包含间隔指定数量字词的两个检索词（任意顺序）的文档。两词顺序可以颠倒	<i>tax N5 reform</i>	
Within Operator (W)	查找包含间隔指定数量字词的两个检索词（固定顺序）的文档。两词顺序不能改变	<i>tax W8 reform</i>	

## 通配符

- 截词符号(\*)用于检索变形体, 单复数
  - econ\* 可以检索到economy, economic, economically, etc
  - Student\*可以检索到student, students
- 通配符: 适用于一个字母(?)用于检索英美单词拼写差异
  - organi?ation 可以检索到 organisation or organization
- 通配符: 适用于多个字母(#)用于检索英美单词拼写差异
  - behavi#r will 可以检索到 behavior or behaviour
- 短语检索 (“”)用于检索固定短语
  - “global warming” 可以检索到固定格式的词组, 位置顺序保持不变。

## 字段

Searchable Tag	Description	Example
AB	Abstract Performs a keyword search of the abstract summaries.	AB civil liberties
AU	Author Performs a keyword search for any authors of an article.	AU Rompalske
IS	ISSN Performs an exact search for a publication's International Standard Serial Number.	IS 1040726X
SO	Journal Name Performs a keyword search for the journal name of the article.	SO International Journal of Toxicology
SU	Subject Performs a keyword search of the subject headings listed in the records.	SU MOTION pictures
TI	Title Searches keywords in a record's English and non-English title field.	TI Fashion Focus
TX	All Text Performs a keyword search of all the database's searchable fields. Using the TX field code will cause the search to look for the keyword in the full text as well as the citation record.	TX Cronyism

# 检索举例：急性胰腺炎患者的护理

新检索 出版物 CINAHL 主题词表 循证护理说明 快速教学 更多 ▾



正在检索: **CINAHL Complete** | [选择数据库](#)

acute pancreati\*

选择一个字段(可选) ▾

搜索

AND ▾

nursing

选择一个字段(可选) ▾

清除 ?

AND ▾

选择一个字段(可选) ▾



[基本检索](#) [高级检索](#) [搜索历史记录](#) ▶

## Pancreatic Pancreatitis

# 检索举例：护理实践过程中的伦理问题

新检索 出版物 CINAHL 主题词表 循证护理说明 快速教学 更多 ▾



正在检索: **CINAHL Complete** | [选择数据库](#)

Ethical issues

SU 主题 ▾

搜索

AND ▾

"nursing practice"

选择一个字段(可选) ▾

[清除](#) ?

AND ▾

选择一个字段(可选) ▾



[基本检索](#) [高级检索](#) [搜索历史记录](#) ▶

研究论文

仅搜索 Pre-CINAHL

CE 模块

综合集成

人类

任一作者是护士

期刊分类

- 全部
- Allied Health
- Alternative/Complementary Therapies
- Biomedical
- Blind Peer-Reviewed

语言

- 全部
- Afrikaans
- Arabic
- Chinese
- Czech

性别

- 全部
- Female
- Male

年龄组

- 全部
- Fetus, Conception to Birth
- Infant, Newborn: birth-1 month
- Infant: 1-23 months
- Child, Preschool: 2-5 years

页数

不包括 Pre-CINAHL

排除 MEDLINE 记录

循证实践

临床查询

- 全部
- Therapy - High Sensitivity
- Therapy - High Specificity
- Therapy - Best Balance
- Prognosis - High Sensitivity

第一作者是护士

随机对照实验

地理区域

- 全部
- Africa
- Asia
- Australia & New Zealand
- Canada

出版物类型

- 全部
- Abstract
- Algorithm
- Anecdote
- Publication

怀孕

住院病人

门诊病人

特殊兴趣

- 全部
- Advanced Nursing Practice
- Case Management
- Chiropractic Care
- Consumer Health

PDF 全文

在“搜索选项”区域中，高级搜索界面提供了其他搜索限制条件，以提高结果的精确度。例如，您可以将结果限制为在指定日期范围内发布的全文文章，或者特定的文章类型和出版物类型

出版物类型

- Masters Thesis
- Meta Analysis
- Meta Synthesis
- Nurse Practice Acts
- Nursing Diagnoses

出版物类型

- Editorial
- Equations & Formulas
- Evidence-Based Care Sheet
- Exam Questions
- Forms

出版物类型

- Critical Path
- Diagnostic Images
- Directories
- Doctoral Dissertation
- Editorial

出版物类型

- Questions and Answers
- Quick Lesson
- Randomized Controlled Trial
- Research
- Research Instrument



# 出版物类型（证据类型）

**综合分析 (Meta-Analysis):** 是用统计的概念与方法，去收集、整理与分析之前学者专家针对某个主题所做的众多实证研究，希望能够找出该问题或所关切的变量之间的明确关系模式。

**系统性文献回顾 (Systematic Review):** 使用明确方法综合全面的文献检索及评读个别的研究，以摘要的方式呈现的医学文献摘要。

**随机控制试验 (Randomized Controlled Trial):** 受试者被随机分配到实验组或对照组（或更多的组别）中，每组接受不同的介入，试验结束之后，研究人员量测记录不同介入所得的成效。

**队列研究 (Cohort Study):** 确定目前患有某种疾病或接受治疗的受试者，受试者被长期追踪，具有特定特征的受试者被认定为某个世代，量测该组成成员间彼此的差异，再比较一开始记录之间的差异。

**病例对照研究 (Case Control Study):** 观察式研究，受试者已经被确认出经历了某结果（如罹患了某疾病），然后将其对比到类似状况，但没有出现该结果的其他受试者。

**病例报告/病例系列 (Case Report/Case Series):** 描述某组病人受到某一被研究的因子的影响状况。

您可以使用左侧列中的选项进一步优化检索结果。通过单击所需来源类型旁边的复选框，可以按来源类型（例如学术期刊，杂志或报纸）筛选结果。您可以在“当前搜索”区域中查看搜索词，任何应用的限制条件或扩展条件等。

精确搜索结果

当前检索

布尔逻辑/词组:  
SU Ethical issues AND "nursing practice"

扩展条件  
应用对等科目

限于

全文  
 有参考  
 有文摘

自: 1979 至: 2023  
出版日期

显示更多

来源类型

所有结果  
 学术理论期刊 (984)  
 杂志 (118)  
 继续教育单位 (36)  
 研究报告 (24)

显示更多

主题: 主要标题  
出版物  
出版者  
语言  
年龄  
性别  
出版地

检索结果: 1 - 50 (共 1,203 个)

1. [Striving to Keep a Clear Conscience by Going Above and Beyond: The Experiences of Intensive Care Unit Nurses.](#)

(includes abstract) Jodaki, Kurosh; Esmaeili, Maryam; Cheraghi, Mohammad Ali; Mazaheri, Monir **Critical Care Nursing Quarterly**, Apr-Jun2023; 46(2): 192-202. 11p. (Article - research, tables/charts) ISSN: 0887-9303

主题: **Critical Care Nursing Ethical Issues; Nursing Practice**; Conscience; Nurse Attitudes; Adult: 19-44 years; Middle Aged: 45-64 years; Male; Female

2. [Bayesian analysis for nurse and midwifery research: statistical, practical and ethical benefits.](#)

(includes abstract) Evelyn Malone, Helen; Coyne, Imelda **Nurse Researcher**, 3/8/2023; 31(1): 25-32. 8p. (Article - research, tables/charts) ISSN: 1351-5578

主题: **Probability Ethical Issues**; Research Nurses Statistics and Numerical Data; Research, Midwifery; Nurse Midwifery Statistics and Numerical Data; Nurses Psychosocial Factors; Models, Theoretical

3. [Providing Competent, Supportive Care for People Who are Transgender...Reprinted with permission from Illinois The Nursing Voice, June 2021.](#)

Robinson, F. Patrick; Roper, Sherry L. **Kentucky Nurse**, Mar-May2023; 71(2): 12-13. 2p. (Article) ISSN: 0742-8367

主题: **Transgender Persons Psychosocial Factors; Gender Specific Care; Nursing Care**; Clinical Competence

PDF 全文

4. [Commentary: Nurses' assessment of the ethical climate of a university hospital in the South of Brazil.](#)

May, Andrée **Journal of Research in Nursing**, Feb2023; 28(1): 36-37. 2p. (Article - commentary) ISSN: 1744-9871

主题: **Nurse Attitudes; Academic Medical Centers Brazil; Organizational Culture; Nursing Care Ethical Issues**; Ethics, Organizational

5. [Nurses' ethical challenges when providing care in nursing homes during the COVID-19 pandemic.](#)

(includes abstract) AH, Hillestad; AMM, Rokstad; S, Tretteteig; SG, Julnes; B, Lichtwarck; S, Eriksen **Nursing Ethics**, Feb2023; 30(1): 32-45. 14p. (Article - research, tables/charts) ISSN: 0969-7330

主题: **COVID-19 Pandemic Norway; Nursing Homes Norway; Nursing Care Ethical Issues**; Work Experiences; Nurse Attitudes Norway; Adult: 19-44 years; Middle Aged: 45-64 years; Male; Female

详细记录

HTML 全文

PDF 全文 (324KB)

相关信息

查找相似结果  
使用智能文本搜索。

结果列表 精确检索 1 共 26

## Targeting endosomal acidification by chloroquine analogs as a promising strategy for the treatment of emerging viral diseases.

作者: Al-Bari, Md. Abdul Alim<sup>1</sup> [alimalbari347@ru.ac.bd](mailto:alimalbari347@ru.ac.bd)

来源: *Pharmacology Research & Perspectives*. Feb2017, Vol. 5 Issue 1, pn/a-N.PAG. 13p.

文献类型: Article

主题词语: \*VIRAL disease treatment  
\***CHLOROQUINE**  
\*ACIDIFICATION  
\*HIV infections  
\*THERAPEUTICS  
\*ENDOSOMES  
\*PHYSIOLOGY  
TREATMENT of Ebola **virus** diseases

作者提供的关键字: antiviral actions  
**Chloroquine** analogs  
endosomal pH and viral replication

摘要: Emerging **viruses** such as HIV, dengue, influenza A, SARS coronavirus, Ebola, and other **viruses** pose a significant threat to human health. Majority of these **viruses** are responsible for the outbreaks of pathogenic lethal infections. To date, there are no effective therapeutic strategies available for the prophylaxis and

工具

- Google Drive
- 添加至文件夹
- 打印
- 电子邮件
- 保存
- 引用
- 导出
- 添加注释
- 永久链接
- 听
- 翻译

点击篇名，查看文章详细信息，进入文章详细页面后，您在左侧的项目栏可以查看这篇文章提供的不同格式的全文。一般有HTML或PDF全文格式。您可从详细记录中打印，发送电子邮件，保存，引用或导出单个结果。要打印，通过电子邮件发送，保存，引用或导出多个结果，请将其添加到文件夹中，然后单击文件夹中的相应图标。

The screenshot displays the EBSCO Cite tool interface. On the left, there are navigation options: '详细记录' (Detailed Record), 'HTML 全文' (HTML Full Text), and 'PDF 全文 (324KB)' (PDF Full Text (324KB)). Below these is a '相关信息' (Related Information) section with a button '查找相似结果' (Find Similar Results) and the text '使用智能文本搜索。' (Use intelligent text search.).

The main content area shows a '引文格式' (Citation Format) window. At the top, it says '结果列表 精确检索 1 共 26'. Below this is a note: '注: 请查看如下说明 EBSCO Connect 并在使用之前进行必要更正。请特别注意个人姓名、大写和日期。请始终参考图书馆资料以确保格式和标点符号正确。' (Note: Please check the following instructions for EBSCO Connect and make necessary corrections before use. Pay special attention to personal names, capitalization, and dates. Always refer to library materials to ensure format and punctuation are correct.).

Two citation formats are shown:

- ABNT** (巴西国家标准) 参考文献: AL, B. M. A. A. Targeting endosomal acidification by chloroquine analogs as a promising strategy for the treatment of emerging viral diseases. *Pharmacology Research & Perspectives*, [s. l.], v. 5, n. 1, p. n/a-N.PAG, 2017. DOI 10.1002/prp2.293. Disponível em: <http://search.ebscohost.com/login.aspx?direct=true&db=a9h&AN=121062982&lang=zh-cn&site=ehost-live>. Acesso em: 16 mar. 2020.
- AMA** (American Medical) 参考列表: AI BMAA. Targeting endosomal acidification by chloroquine analogs as a promising strategy for

At the bottom of the citation window, there is a yellow bar with the text: '导出至文献目录管理软件 (EndNote、ProCite、Reference Manager、RefWorks、BibTeX 等) »' (Export to reference management software (EndNote, ProCite, Reference Manager, RefWorks, BibTeX, etc.) »).

Below the citation window, the title of the article is displayed: 'Targeting endosomal acidification by chloroquine analogs as a promising strategy for the treatment of emerging viral diseases.'

On the right side, there is a '工具' (Tools) panel with various options: Google Drive, 添加至文件夹 (Add to folder), 打印 (Print), 电子邮件 (Email), 保存 (Save), 引用 (Cite), 导出 (Export), 添加注释 (Add comment), 永久链接 (Permanent link), 听 (Listen), and 翻译 (Translate). The '引用' (Cite) button is highlighted with a red box.

**Cite**工具通过提供各种流行（包括**MLA**，**AMA**和**APA**）的引文格式，使引用信息变得简单。滚动滑块查看可用的引文格式，以查找要添加到文档中的所需引文，选中所需的引文格式，使用浏览器的复制和粘贴功能将引文添加到您文档的**Works Cited**页面。

<< 详细记录

HTML 全文

PDF 全文 (324KB)

相关信息

[查找相似结果](#)  
使用智能文本搜索。

结果列表 精确检索 < 1 共 26 >

Export Manager 保存 电子邮件

要保存的对象数: 1

将引文保存为如下格式的文件:

- 直接以 RIS 格式导出 (例如 CITAVI、EasyBib、EndNote、ProCite、Reference Manager、Zotero)
- 通用文献目录管理软件
- XML 格式引文
- BibTeX 格式引文
- MARC21 格式引文
- 直接导出到 RefWorks。
- 直接导出到 EndNote Web
- 直接导出到 EasyBib
- 下载 CSV

保存

取消

## Targeting endosomal acidification by chloroquine

工具

Google Drive

添加至文件夹

打印

电子邮件

保存

引用

导出

添加注释

永久链接

听

导出文章到文献管理工具，要导出多个结果，请将其添加到文件夹中，然后在文件夹中对文章进行批量导出。

« 详细记录

HTML 全文

PDF 全文 (324KB)

查找相似结果  
使用智能文本搜索。

结果列表 精确检索 1 共 42

选择语种 翻译

标题: Targeting endosomal acidification by chloroquine analogs as a promising strategy for the treatment of emerging viral diseases. 排序依据: Al-Bari, Md. Abdul Alim, Pharmacology Research & Perspectives, 20521707, Feb2017, 卷 5, 期号 1

数据库: Academic Search Complete

**Targeting endosomal acidification by chloroquine analogs as a promising strategy for the treatment of emerging viral diseases.**

内容

Introduction

Therapeutically Exploitation as Lysosomotropic

Listen

webReader by ReadSpeaker

SARS coronavirus, Ebola, and other viruses pose a significant threat to human health. Majority of these viruses are responsible for the outbreaks of pathogenic lethal infections. To date, there are no effective therapeutic strategies available for the prophylaxis and

工具

- Google Drive
- 添加至文件夹
- 打印
- 电子邮件
- 保存
- 引用
- 导出
- 添加注释
- 永久链接

如果您在查看的是HTML格式全文，您可以使用文章的Text-To-Speech智能朗读功能，同时您也可以使用文章翻译功能，将文章在线翻译成相应语言。

## 如何检索HTML格式文献？

输入公式：keyword and FM T 可以检索到HTML格式文献，实现全文翻译及在线朗读功能，注意PDF文章无此功能。



正在检索: CINAHL Complete | 选择数据库

Ethical issues SU 主题 搜索

AND nursing practice 选择一个字段(可选) 清除

AND FM T 选择一个字段(可选) + -

[基本检索](#) [高级检索](#) [搜索历史记录](#)

**精确搜索结果**

当前检索

布尔逻辑/词组:  
SU Ethical issues AND nursing practice AND FM T

扩展条件  
应用对等科目

限于

全文  
 有参考  
 有文摘

自: 1998 出版日期 至: 2022

[显示更多](#)

来源类型

所有结果  
 学术理论期刊 (40)  
 杂志 (5)

主题: 主要标题

出版物

出版者

检索结果: 1 - 50 (共 52 个)

最近日期 页面选项 共享

### 1. An ethical approach.



Grant, Ernest J. American Nurse Today, Oct2022; 17(10): 18-18. 1p. (Article - editorial) ISSN: 1930-5583

主题: American Nurses Association; Codes of Ethics; Ethics, **Nursing**; **Nursing Care Ethical Issues**

[HTML 全文](#) [PDF 全文](#)

### 2. Fostering professional identity in nursing.



Owens, Rhoda A.; Godfrey, Nelda American Nurse Today, Sep2022; 17(9): 12-16. 5p. (Article - pictorial, tables/charts) ISSN: 1930-5583

主题: Professional Identity; **Nursing Practice Ethical Issues**; COVID-19 Pandemic Adverse Effects; **Nursing Practice Standards**

[HTML 全文](#) [PDF 全文](#)

### 3. Implementing ethical aspects in the development of a robotic system for nursing care: a qualitative approach.



(includes abstract) Nielsen, Svenja; Langensiepen, Sina; Madi, Murielle; Elissen, Maurice; Stephan, Astrid; Meyer, Gabriele BMC Nursing, 7/8/2022; 21(1): 1-10. (Article - research, tables/charts) ISSN: 1472-6955

主题: Robotics **Ethical Issues**; Ethics, **Nursing Evaluation**; **Nursing Care Ethical Issues**; **Nursing Care Methods**; Software Design; Robotics Utilization; Adult: 19-44 years; Middle Aged: 45-64 years; Male; Female



参考文献: (15)

[HTML 全文](#) [PDF 全文](#)



# PICO检索策略

# 什么是PICO?

- *PICO*是一种在开始研究之前，形成**临床研究问题的模式**。它是一个缩略符号，可用来发展良好的临床 实验问题架构，并用来帮助记忆主要描述四个临床前景问题。 (*Yale University's Cushing/Whitney* 医学图书馆)。前景问题需确认想要研究的患者或族群，计划要使用的诊断介入及治疗模式，或有哪些 选择方案（如果有的话）及预期或希望避免的治疗结果。这就形成了*PICO*模式的四个要素：***Patient***( 病人或母群体)/ ***Problem***(问题), ***Intervention***(介入), ***Comparison***(对照) and ***Outcome***(结果)。
- *PICO*过程从设定的临床情境开始，从临床情境建构一个与案例相关的问题并以便于找到答案的方式表 达。只要制定出结构良好的问题，研究人员将能够更好地在文献中搜索能够支持其原始*PICO*问题的证 据。

# 完整掌握执行PICO搜寻的7步



1. 形成PICO问题 ( Formulate the PICO Question )
2. 为PICO的每个元素定关键词 ( Identify Keywords for each PICO Element )
3. 制定检索策略 ( Plan the Search Strategy )
4. 执行检索 ( Execute the Search )
5. 筛选搜寻结果 ( Refine the Results )
6. 阅读文献 ( Review the Literature )
7. 评估证据的等级 ( Assess the Evidence )

# 步骤一：形成PICO问题

## 临床情境：

您是有执照的护理师 (Registered Nurse)，在泌尿科病房服务。您有一位病人是55岁的男性，刚接受腹部手术后正在恢复中（腹腔镜摄护腺切除术）。这名病患抱怨他的腹部疼痛且感到恶心。他有腹胀、无肠蠕动声。医生根据临床表征与影像怀疑是麻痹性肠阻塞。

您打算在下一次的循证护理实务委员会会议上讨论此案例。委员会决定做一项案例研究，以确定是否有证据表明，手术后如嚼口香糖等简单的介入，是否可以预防腹部手术后的术后肠阻塞。

**基于此临床情境，我们的研究问题是：在病人经历过腹部手术后，是否有证据可以比较有嚼口香糖与未嚼口香糖对于术后肠阻塞的影响？**

## 步骤二：确认每一个PICO元素的关键词

- Population (P) – 我们对于研究哪些个人或群体感兴趣？
- Intervention (I) – 我们正考虑采取哪种行动（介入、治疗）？
- Comparison (C) – 除了规划中的行动（介入、治疗），还有哪些行动是要加入一起做比较的？
- Outcome (O) – 期待什么结果？

“在病人经历过腹部手术后，是否有证据比较嚼口香糖与未嚼口香糖对于术后肠阻塞的影响？”

# PICO元素的关键词

PICO元素	关键词
P (病人或母群体 Patient or Population)	<b>Patients</b> undergoing <b>abdominal surgery</b> (经历过腹部手术后的病人)
I (介入 Intervention)	<b>Chewing gum</b> (有嚼口香糖)
C (对照 Comparison)	Not chewing gum (未嚼口香糖)
O (结果 Outcome)	Affects <b>post-operative ileus</b> (对于术后肠阻塞的影响)

## 步骤三：制定检索策略

制定检索策略：

- 选定哪个数据库进行检索？
- 确认您的问题的主要元素？
- 将一般用语转换成主题描述CINAHL主题或同义词

PICO 元素	关键词 KEYWORDS	关键词 SEARCH TERMS	检索策略 SEARCH STRATEGIES
P (病人或母群体 Patient or Population)	Patients undergoing abdominal surgery (经历过腹部手术后的病人)	Abdominal Surgery	Abdominal surgery <b>OR</b> Surgery <b>OR</b> Postoperative <b>OR</b> Recovery
I (介入 Intervention)	Chewing gum (有嚼口香糖)	Chewing Gum	Chewing Gum <b>OR</b> Gum
C (对照 Comparison)	Not chewing gum (未嚼口香糖)		
O (结果 Outcome)	Affects post-operative ileus (对于术后肠阻塞的影响)	Postoperative Ileus	Postoperative Ileus <b>OR</b> Paralytic Ileus <b>OR</b> Ileus



# 步骤四：执行检索

正在检索: **CINAHL Plus with Full Text** | [选择数据库](#)

EBSCOhost

选择一个字段(可选) ▾ **搜索**

AND ▾ 选择一个字段(可选) ▾ 清除 ?

AND ▾ 选择一个字段(可选) ▾ + -

[基本检索](#) [高级检索](#) [搜索历史记录](#)

选用高级检索开始检索，利用高级检索技巧和检索历史合并检索。

## 检索选项

重新设置

### 检索模式和扩展条件

#### 检索模式 ?

- 布尔逻辑/词组
- 查找全部检索词语
- 查找任何检索词语
- 智能文本搜索 [提示](#)

#### 运用相关词语

#### 同时在文章全文范围内搜索

#### 应用对等科目

# 检索式 1



正在检索: **CINAHL Plus with Full Text** | [选择数据库](#)

Abdominal surgery	选择一个字段(可选) ▾	搜索	
OR ▾ Surgery	选择一个字段(可选) ▾		清除 ?
OR ▾ Postoperative	选择一个字段(可选) ▾		
OR ▾ Recovery	选择一个字段(可选) ▾		+ -

[基本检索](#) [高级检索](#) [搜索历史记录](#) ▶

## 精确搜索结果

### 当前检索

#### 布尔逻辑/词组:

Abdominal surgery OR  
Surgery OR Postoperative  
OR Recovery

#### 扩展条件

应用对等科目 ✕

限于

检索结果: 1 - 10 (共 708,850 个)

相关性 ▾ 页面选项 ▾ 共享 ▾

### 1. [State of Recovery 6 Months After Rectal Cancer Surgery: Postoperative Symptoms and Differences With Regard to Surgical Procedure.](#)



学术期刊

(includes abstract) Jakobsson, Jenny; Gastroenterology Nursing, Mar/Apr2021; 44(2): 98-105. 8p. (Article - research, tables/charts) ISSN: 1042-895X

Rectal cancer **surgery** has developed to be highly technological and precise. Nevertheless, **postoperative** symptoms can affect patients for a long time after **surgery** and might also be persistent. Th...

**科目:** Rectal Neoplasms **Surgery; Surgery, Operative Methods; Recovery; Postoperative** Complications Physiopathology; Signs and Symptoms; Middle Aged: 45-64 years; Aged: 65+ years; Male; Female

# 检索式 2



正在检索: **CINAHL Plus with Full Text** | [选择数据库](#)

Chewing Gum	选择一个字段(可选) ▾	<b>搜索</b>	
OR ▾ Gum	选择一个字段(可选) ▾		<a href="#">清除</a> ?
AND ▾	选择一个字段(可选) ▾		+ -

[基本检索](#) [高级检索](#) [搜索历史记录](#)

## 精确搜索结果

### 当前检索

布尔逻辑/词组:

Chewing Gum OR Gum

扩展条件

应用对等科目

限于

检索结果: 1 - 10 (共 5,667 个)

相关性 ▾ 页面选项 ▾ 共享 ▾

### 1. The Effects of **Chewing Gum** in Preventing Eyestrain.



学术期刊

(includes abstract) Asakawa, Ken; Kanno, Susumu; Ando, Tomonori; Osawa, Kenji; Ishikawa, Hitoshi; BioMed Research International, 12/7/2020; 1-7. 7p. (Article - research, tables/charts, randomized controlled trial) ISSN: 2314-6133

Purpose. To investigate the effects of **chewing gum** and tablet candy to reduce eyestrain in healthy individuals. Materials and Methods. A double-blinded crossover trial was conducted. Forty-six he...

科目: **Chewing Gum**; Candy; Eye Diseases Prevention and Control; Adult: 19-44 years; Middle Aged: 45-64 years; Male; Female

[HTML 全文](#) [PDF 全文](#)

# 检索式 3



正在检索: CINAHL Plus with Full Text [选择数据库](#)

Postoperative Ileus	选择一个字段(可选) ▾	搜索
OR ▾ Paralytic Ileus	选择一个字段(可选) ▾ <a href="#">清除 ?</a>	
OR ▾ Ileus	选择一个字段(可选) ▾ (+) (-)	

[基本检索](#) [高级检索](#) [搜索历史记录](#)

## 精确搜索结果

检索结果: 1 - 10 (共 4,537 个)

相关性 ▾ 页面选项 ▾ 共享 ▾

### 当前检索

#### 布尔逻辑/词组:

Postoperative Ileus OR  
Paralytic Ileus OR Ileus

#### 扩展条件

应用对等科目

### 限于

- 全文
- 有参考

## 1. Gastrointestinal Motility and Gut Hormone Secretion in response to Shenhuang Plaster in a Postoperative Ileus Rat Model.



学术期刊

(includes abstract) Shi, Yanan; Zheng, Yingsong; Xu, Jingming; Ding, Bin; Shou, Qiyang; Chen, Guiping; Liu, Ting; Sun, Qihua; Xu, Xiaohong; Evidence-based Complementary & Alternative Medicine (eCAM), 6/2/2021; 1-10. 10p. (Article - pictorial, research, tables/charts) ISSN: 1741-427X

**Postoperative ileus (POI)**, a gastrointestinal function disorder, is a complication that arises from surgery. Shenhuang plaster (SHP) application to the Shenque acupoint (CV8) to promote the recov...

**科目:** Intestinal Obstruction Surgery; Gastrointestinal Motility; Gastrointestinal Hormones Metabolism; Gastrointestinal Hormones Blood; Acupuncture Points; **Postoperative** Complications Prevention and Control; Models, Biological

PDF 全文

# 检索组合：利用搜索历史



正在检索: CINAHL Plus with Full Text [选择数据库](#)

S2 AND S3 AND S4 选择一个字段(可选) ▾ 搜索

AND ▾ 选择一个字段(可选) ▾ 清除 ?

AND ▾ 选择一个字段(可选) ▾ + -

[基本检索](#) [高级检索](#) [搜索历史记录](#) ▾

## 搜索历史记录/快讯

[打印检索历史记录](#) [检索搜索](#) [检索快讯](#) [保存检索/快讯](#)

全选/撤消全选 **AND 检索** **OR 检索** **删除检索** 刷新检索结果

检索 ID#	检索词语	检索选项	操作
<input type="checkbox"/> S5	S2 AND S3 AND S4	扩展条件 - 应用对等科目 检索模式 - 布尔逻辑/词组	<a href="#">查看结果 (75)</a> <a href="#">查看详细资料</a> <a href="#">编辑</a>
<input checked="" type="checkbox"/> S4	Postoperative Ileus OR Paralytic Ileus OR Ileus	扩展条件 - 应用对等科目 检索模式 - 布尔逻辑/词组	<a href="#">查看结果 (4,537)</a> <a href="#">查看详细资料</a> <a href="#">编辑</a>
<input checked="" type="checkbox"/> S3	Chewing Gum OR Gum	扩展条件 - 应用对等科目 检索模式 - 布尔逻辑/词组	<a href="#">查看结果 (5,667)</a> <a href="#">查看详细资料</a> <a href="#">编辑</a>
<input checked="" type="checkbox"/> S2	Abdominal surgery OR Surgery OR Postoperative OR Recovery	扩展条件 - 应用对等科目 检索模式 - 布尔逻辑/词组	<a href="#">查看结果 (708,850)</a> <a href="#">查看详细资料</a> <a href="#">编辑</a>
<input type="checkbox"/> S1	Abdominal surgery AND Surgery AND Postoperative AND Recovery	扩展条件 - 应用对等科目 检索模式 - 布尔逻辑/词组	<a href="#">查看结果 (436)</a> <a href="#">查看详细资料</a> <a href="#">编辑</a>



## 步骤七：评估证据的等级

完整掌握PICO检索的最后一步，是确定每篇相关文章中的证据等级。在寻找最佳可用证据时，可参考证据的等级与强度，在阅读期刊文章时，请选择证据等级最高的文章，例如统合分析(Meta-Analysis)或系统性回顾(Systematic Review)。



# Chewing gum for intestinal function recovery after caesarean section: a systematic review and meta-analysis.

**作者:** Wen Z; The First Affiliated Hospital of Soochow University, No. 188 Shizi Street, Gusu district, Su Zhou, Jiangsu province, China.; Nursing School of Soochow University, Su Zhou, China.  
Shen M; The First Affiliated Hospital of Soochow University, No. 188 Shizi Street, Gusu district, Su Zhou, Jiangsu province, China. smf8165@126.com.; Nursing School of Soochow University, Su Zhou, China. smf8165@126.com.  
Wu C; The First Affiliated Hospital of Soochow University, No. 188 Shizi Street, Gusu district, Su Zhou, Jiangsu province, China.  
Ding J; Nursing School of Soochow University, Su Zhou, China.  
Mei B; Nursing School of Soochow University, Su Zhou, China.

**来源:** BMC Pregnancy And Childbirth [BMC Pregnancy Childbirth] 2017 Apr 18; Vol. 17 (1), pp. 105. *Date of Electronic Publication:* 2017 Apr 18.

**出版物类型:** Journal Article; Meta-Analysis; Review; Systematic Review

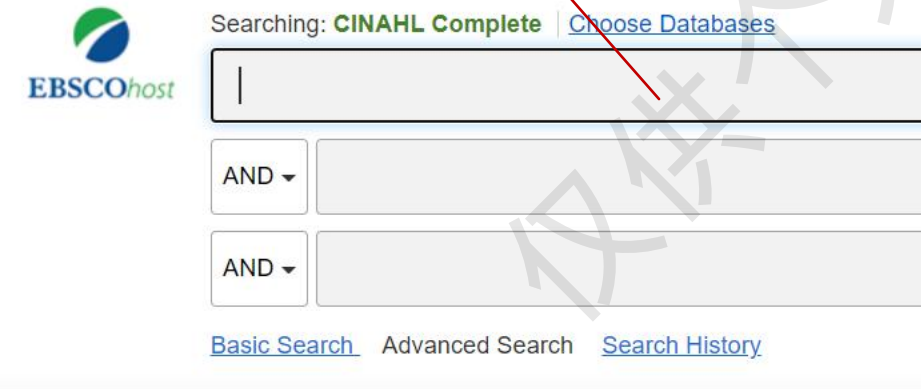
**语言:** English

**期刊信息:** *Publisher:* BioMed Central *Country of Publication:* England *NLM ID:* 100967799 *Publication Model:* Electronic *Cited Medium:* Internet *ISSN:* 1471-2393 (Electronic) *Linking ISSN:* 14712393 *NLM ISO Abbreviation:* BMC Pregnancy Childbirth *Subsets:* MEDLINE

**印记名称:** *Original Publication:* London : BioMed Central, [2001-

**MeSH 词语:** Chewing Gum\*  
Cesarean Section/\*adverse effects  
Gastrointestinal Motility/\*physiology  
Ileus/\*prevention & control  
Postoperative Complications/\*prevention & control  
Female ; Humans ; Ileus/etiology ; Postoperative Period ; Randomized Controlled Trials as Topic ; Recovery of Function

# 主题词检索



Searching: **CINAHL Complete** | [Choose Databases](#)

AND

AND

[Basic Search](#) [Advanced Search](#) [Search History](#)

*Q. Where does EBSCO get the CINAHL subject headings from?  
The CINAHL subject headings are based on the MeSH headings, with additional specific nursing and allied health headings added as appropriate. Each year, the headings are updated and revised relative to terminology needed in these fields. In addition, new terms from MeSH may be added as well.*

*Q. How many terms are in the CINAHL subject headings?  
The number terms in the CINAHL subject headings are as follows:*

- Total Number of Headings 15,656

[CINAHL Subject Headings - Frequently Asked Questions](#)

## Search Options

### Search Modes and Expanders

#### Search modes ?

- Boolean/Phrase
- Find all my search terms
- Find any of my search terms
- SmartText Searching [Hint](#)

Apply equivalent subjects





# 案例：气管插管患者的气道护理

New Search Publications CINAHL Subject Headings Evidence-Based Care Sheets Quick Lessons More ▾

MY Database: CINAHL Complete

EBSCOhost

Basic Search Advanced Search Search

CINAHL Subject Headings 查看教程

intubation

Term Begins With  Term Contains

**结果用于: intubation**

选中某框以查看副标题。 单击链接词语以了解结构树视图。

	展开 (+)	主要概念	领域
<input type="checkbox"/> <a href="#">Intubation</a>	<input type="checkbox"/>	<input type="checkbox"/>	
<input type="checkbox"/> <a href="#">Intubation, Intratracheal</a>	<input type="checkbox"/>	<input type="checkbox"/>	
<input type="checkbox"/> <a href="#">Intubation, Retrograde</a>	<input type="checkbox"/>	<input type="checkbox"/>	
<input type="checkbox"/> <a href="#">Intubation, Gastrointestinal</a>	<input type="checkbox"/>	<input type="checkbox"/>	
<input type="checkbox"/> <a href="#">Gastrointestinal Intubation (Iowa NIC)</a>	<input type="checkbox"/>	<input type="checkbox"/>	
Transtracheal Retrograde Intubation 使用: <a href="#">Intubation, Retrograde</a>			
Retrograde Transtracheal Intubation 使用: <a href="#">Intubation, Retrograde</a>			
Retrograde Intubation 使用: <a href="#">Intubation, Retrograde</a>			
Nasotracheal Intubation 使用: <a href="#">Intubation, Intratracheal</a>			

41 | health.ebsco.com

[返回至词语列表](#)

结构树视图用于: Intubation, Intratracheal

搜索数据库

选中某框  
以查看副标题。

单击链接词语  
以了解结构树视图。

展开 (+) | 主要概念 | 领域

?

<input type="checkbox"/>	<input type="checkbox"/>	<a href="#">Miscellaneous Techniques</a>	<input type="checkbox"/>	<input type="checkbox"/>	
<input type="checkbox"/>	<input type="checkbox"/>	<a href="#">Intubation</a>	<input type="checkbox"/>	<input type="checkbox"/>	
<input type="checkbox"/>	<input type="checkbox"/>	Intubation, Gastrointestinal	<input type="checkbox"/>	<input type="checkbox"/>	
<input type="checkbox"/>	<input type="checkbox"/>	<a href="#">Intubation, Intratracheal</a>	<input type="checkbox"/>	<input type="checkbox"/>	
<input type="checkbox"/>	<input type="checkbox"/>	Intubation, Retrograde	<input type="checkbox"/>	<input type="checkbox"/>	
<input type="checkbox"/>	<input type="checkbox"/>	Laryngeal Masks	<input type="checkbox"/>	<input type="checkbox"/>	
<hr/>					
<input type="checkbox"/>	<input type="checkbox"/>	<a href="#">Therapeutics</a>	<input type="checkbox"/>	<input type="checkbox"/>	
<input type="checkbox"/>	<input type="checkbox"/>	<a href="#">Airway Management</a>	<input type="checkbox"/>	<input type="checkbox"/>	
<input type="checkbox"/>	<input type="checkbox"/>	Cricothyrotomy	<input type="checkbox"/>	<input checked="" type="checkbox"/>	
<input type="checkbox"/>	<input type="checkbox"/>	Heimlich Maneuver	<input type="checkbox"/>	<input type="checkbox"/>	
<input type="checkbox"/>	<input type="checkbox"/>	<a href="#">Intubation, Intratracheal</a>	<input type="checkbox"/>	<input type="checkbox"/>	
<input type="checkbox"/>	<input type="checkbox"/>	Intubation, Retrograde	<input type="checkbox"/>	<input type="checkbox"/>	
<input type="checkbox"/>	<input type="checkbox"/>	Tracheostomy	<input type="checkbox"/>	<input type="checkbox"/>	

搜索词语

展开 (+)

主要概念

选中某框以选择主题词表，从而开始创建搜索策略。



结构树视图用于: Intubation, Intratracheal Subheadings for: Intubation, Intratracheal

选中某框以查看副标题。	单击链接词语以了解结构树视图。	展开 (+)	主要概念	领域
<input type="checkbox"/>	<a href="#">Miscellaneous Techniques</a>	<input type="checkbox"/>	<input type="checkbox"/>	
<input type="checkbox"/>	<a href="#">Intubation</a>	<input type="checkbox"/>	<input type="checkbox"/>	
<input type="checkbox"/>	<input type="checkbox"/> Intubation, Gastrointestinal	<input type="checkbox"/>	<input type="checkbox"/>	
<input checked="" type="checkbox"/>	<a href="#">Intubation, Intratracheal</a>	<input checked="" type="checkbox"/>	<input type="checkbox"/>	
<input type="checkbox"/>	<input type="checkbox"/> Intubation, Retrograde	<input type="checkbox"/>	<input type="checkbox"/>	
<input type="checkbox"/>	<input type="checkbox"/> Laryngeal Masks	<input type="checkbox"/>	<input type="checkbox"/>	
<hr/>				
<input type="checkbox"/>	<a href="#">Therapeutics</a>	<input type="checkbox"/>	<input type="checkbox"/>	
<input type="checkbox"/>	<a href="#">Airway Management</a>	<input checked="" type="checkbox"/>	<input type="checkbox"/>	
<input type="checkbox"/>	<input type="checkbox"/> Cricothyrotomy	<input checked="" type="checkbox"/>	<input type="checkbox"/>	
<input type="checkbox"/>	<input type="checkbox"/> Heimlich Maneuver	<input type="checkbox"/>	<input type="checkbox"/>	
<input checked="" type="checkbox"/>	<a href="#">Intubation, Intratracheal</a>	<input checked="" type="checkbox"/>	<input type="checkbox"/>	
<input type="checkbox"/>	<input type="checkbox"/> Intubation, Retrograde	<input type="checkbox"/>	<input type="checkbox"/>	
<input type="checkbox"/>	<input type="checkbox"/> Tracheostomy	<input type="checkbox"/>	<input type="checkbox"/>	

- 包括全部副标题  
或者选择一个或多个副标题以限制检索范围
- Adverse Effects/AE
  - Classification/CL
  - Contraindications/CT
  - Economics/EC
  - Education/ED
  - Equipment And Supplies/ES
  - Ethical Issues/EI
  - Evaluation/EV
  - History/HI
  - Legislation And Jurisprudence/LJ
  - Methods/MT
  - Mortality/MO
  - Nursing/NU
  - Organizations/OG
  - Psychosocial Factors/PF
  - Standards/ST
  - Statistics And Numerical Data/SN

搜索数据库

搜索词语	展开 (+)	主要概念
Intubation, Intratracheal	<input checked="" type="checkbox"/>	<input type="checkbox"/>



Database: CINAHL Complete

[Basic Search](#) [Advanced Search](#) [Search History](#)

[CINAHL Subject Headings](#) [View Tutorials](#)

airway management

Browse

Term Begins With  Term Contains  Relevancy Ranked



Your previously selected search terms are being retained.

[Clear all previous search terms](#)

结果用于: intubation

选中某框以查看副标题。 | 单击链接词语以了解结构树视图。

- [Intubation](#)
- [Intubation, Intratracheal](#)
- [Intubation, Retrograde](#)
- [Intubation, Gastrointestinal](#)
- [Gastrointestinal Intubation \(Iowa NIC\)](#)
- Transtracheal Retrograde Intubation 使用: [Intubation, Retrograde](#)
- Retrograde Transtracheal Intubation 使用: [Intubation, Retrograde](#)
- Retrograde Intubation 使用: [Intubation, Retrograde](#)
- Nasotracheal Intubation 使用: [Intubation, Intratracheal](#)
- Intubation, Endotracheal 使用: [Intubation, Intratracheal](#)
- Intubation, Nasotracheal 使用: [Intubation, Intratracheal](#)
- Intubation, GI 使用: [Intubation, Gastrointestinal](#)
- Intratracheal Intubation 使用: [Intubation, Intratracheal](#)
- Guided Blind Oral Intubation 使用: [Intubation, Retrograde](#)
- GI Intubation 使用: [Intubation, Gastrointestinal](#)

[intubation \(以关键字检索\)](#)

← 上一页

更多 ▶

[浏览其它词语](#)

**结果用于: airway management**

选中某框以查看副标题。 | 单击链接词语以了解结构树视图。

	展开 (+)	主要概念	领域
<input checked="" type="checkbox"/> <a href="#">Airway Management</a>	<input type="checkbox"/>	<input checked="" type="checkbox"/>	
<input type="checkbox"/> <a href="#">Artificial Airway Management (lowa NIC)</a>	<input type="checkbox"/>	<input type="checkbox"/>	
<input type="checkbox"/> <a href="#">Airway Management (lowa NIC)</a>	<input type="checkbox"/>	<input type="checkbox"/>	
<input type="checkbox"/> <a href="#">Personnel Management</a>	<input type="checkbox"/>	<input type="checkbox"/>	
<input type="checkbox"/> <a href="#">Practice Management Information Systems</a>	<input type="checkbox"/>	<input type="checkbox"/>	
<input type="checkbox"/> <a href="#">Decision Support Systems, Management</a>	<input type="checkbox"/>	<input type="checkbox"/>	
<input type="checkbox"/> <a href="#">Continuous Positive Airway Pressure</a>	<input type="checkbox"/>	<input type="checkbox"/>	

**Subheadings for: Airway Management**

包括全部副标题  
或者选择一个或多个副标题以限制检索范围

- Adverse Effects/AE
- Classification/CL
- Contraindications/CT
- Economics/EC
- Education/ED
- Equipment And Supplies/ES
- Ethical Issues/EI
- Evaluation/EV

**搜索数据库**

搜索词语	展开 (+)	主要概念
<a href="#">Intubation, Intratracheal</a>	<input checked="" type="checkbox"/>	<input type="checkbox"/>
<a href="#">Airway Management</a>	<input type="checkbox"/>	<input checked="" type="checkbox"/>

Combine selections with:  
 AND  OR

New Search Publications CINAHL Subject Headings Evidence-Based Care Sheets Quick Lessons More Sign Out Folder Preferences Languages Help Exit

MY Searching: **CINAHL Complete** | Choose Databases

(MH "Intubation, Intratracheal+") AND (MM "Airway" **Select a Field (optional)** **Search**

AND  **Select a Field (optional)** Clear ?

AND  **Select a Field (optional)** + -

Basic Search Advanced Search Search History

---

Refine Results Search Results: 1 - 10 of 1,299 Relevance Page Options Share

Folder has items

- Public preference for COV...
- The Need for Novel Approa...
- Understanding COVID-19 va...

Go to: Folder View

**Current Search**

Find all my search terms:  
(MH "Intubation, Intratracheal+") AND (MM "Airway ...

**Expanders**  
Apply equivalent subjects

**Limit To**

Full Text  
 References Available  
 Abstract Available

From: 1983 Publication Date To: 2021

Show More

**Source Types**

All Results  
 Academic Journals (1,156)  
 Magazines (114)

**1. Changes in Airway Management and Adverse Events Related to Laryngeal Mask Airway Use in Obese Patients in the Ambulatory Surgical Setting.**

(includes abstract) Gill, Joel; Wood, Nada L.; Joyner, Meredith; AANA Journal, Dec2020; 88(6): 439-444. 6p. (Article - research, tables/charts) ISSN: 0094-6354

Academic Journal

In the ambulatory surgical setting, the anesthesia provider must implement safe and efficient airway management techniques for an increasingly obese population. The laryngeal mask airway (LMA) is

**Subjects:** Surgicenters; Obesity; Laryngeal Masks Adverse Effects; Airway Management; Intraoperative Complications; Middle Aged: 45-64 years; Female; Male

PDF Full Text

**2. Respiratory Therapist Endotracheal Intubation Practices.**

(includes abstract) Miller, Andrew G.; Gentile, Michael A.; Coyle, Joseph P.; Respiratory Care, Jul2020; 65(7): 954-960. 7p. (Article - CEU, research, tables/charts) ISSN: 0020-1324

Academic Journal

BACKGROUND: Endotracheal intubation is a common procedure performed by respiratory therapists (RTs). The purpose of this study was to describe current RT intubation practices in North Carolina th...

**Subjects:** Respiratory Therapists North Carolina; Intubation, Intratracheal; Respiratory Therapy Service Methods; Airway Management Methods; Male; Female

Show all 4 Images

PDF Full Text

查看检索结果，文章的主题词部分均会出现所选的主题词

<< Detailed Record

PDF Full Text

Find Similar Results  
using SmartText Searching.

< Result List Refine Search < 1 of 23 >

# Airway Management: Emergency Intubation and the Respiratory Therapist.

Authors: [Pruitt, Bill](#)

Affiliation: Senior instructor and director of clinical education in the department of Cardiorespiratory Sciences, College of Allied Health Sciences, at the University of South Alabama in Mobile

Source: [RT: The Journal for Respiratory Care Practitioners](#) (RT), Aug2019; 14-16. (3p)

Publication Type: Article - pictorial

Language: English

Major Subjects: [Airway Management](#)  
[Intubation, Intratracheal](#) -- [Methods](#)  
[Emergency Care](#)  
[Respiratory Therapists](#)  
[Professional Role](#)

Minor Subjects: [Intubation, Intratracheal](#) -- [Equipment and Supplies](#); [Patient Positioning](#); [Respiration, Artificial](#) -- [Equipment and Supplies](#); [Oxygenation](#); [Patient Assessment](#); [Clinical Competence](#); [Intubation, Intratracheal](#) -- [Adverse Effects](#); [Adverse Health Care Event](#) -- [Prevention and Control](#)

Abstract: The article discusses aspects of **emergency intubation**, which includes the procedure itself, special aids used to intubate, and the role of respiratory therapists in performing **intubation**. Topics mentioned include rapid sequence induction during a code, the use of a mnemonic to assist in rapid identification of adult patients who may be hard to intubate, and patient characteristics that can give clues that the **intubation** may be challenging.

Journal Subset: Allied Health; Peer Reviewed; USA



Tools >>

Google Drive

Add to folder

Print

E-mail

Save

Cite

Export

Create Note

Permalink

# 存储及共享—文件夹的应用

- 可免费注册个人文件夹
- 可长期保存个人检索到的文章、图书、视频等内容，还可以订阅期刊或检索提醒，新建或分享文件夹。
- 点击右上角“登录”，先创建文件夹



<< **Refine Results**

Current Search

Find all my search terms:

S9 AND S10 AND S11

Expanders

Apply equivalent subjects

Limit To

- Full Text
- References Available
- Abstract Available

From:  Publication Date To:



Show More

Source Types

- All Results
- Academic Journals (71)
- Magazines (2)
- Dissertations (1)

Search Results: 1 - 10 of 75

Relevance Page Options **Share**

1. **Gum Chewing and Prolonged Postoperative Ileus: An Observational Study Examining the Impact of an Evidence-Based Practice Change.**



Academic Journal

(includes abstract) Chan, Linda; MEDSURG Nursing, Nov/Dec2019; 28(6): 387-391. 5p. (1092-0811

An observational retrospective study which explored the sustainability of an evidence-based gum chew intervention after abdominal surgery, is presented. Topi...

**Subjects:** Chewing Gum Therapeutic Use; Intestinal Obstruction; Postoperative Complications; Abdomen Surgery



PDF Full Text

Add to folder :

Results (1-10)

Add search to folder:  
S9 AND S10 AND S11

Create an alert :

E-mail Alert RSS Feed

Use Permalink :

Persistent link to search (copy & paste)

Export results :

E-mail a link to download exported results (up to 75)

2. **A prospective randomized controlled trial to evaluate effect of chewing gum on postoperative ileus in elderly patient after hip fracture.**



Academic Journal

(includes abstract) Yong-Han Cha; Dae Cheol Nam; Sang-Youn Song; Jun-Il Yoo; Cha, Yong-Han; Nam, Dae Cheol; Song, Sang-Youn; Yoo, Jun-Il; Medicine, 4/2/2021; 100(13): 1-6. 6p. (journal article - research, randomized controlled trial) ISSN: 0025-7974 PMID: NLM33787625

Abstract: Factors related to developing postoperative ileus (POI) vary from pharmacologic, inflammatory, hormonal, metabolic, gastrointestinal physiology, neurologic, to psychological factors. Al...

**Subjects:** Chewing Gum; Intestinal Diseases Epidemiology; Intestinal Obstruction Epidemiology; Postoperative Complications Epidemiology; Hip Fractures Surgery; Aged: 65+ years; Female; Male

批量保存文章或保存检索式至文件夹中

Folder has items

Gum Chewing and Prolonged...

Go to: Folder View



### Folder Contents

◀ Back

To store these items in the folder for a future session, [Sign In to My EBSCOhost](#).



- Articles (10)
- Images (0)
- Videos (0)
- Companies (0)
- Pages (0)
- eBooks (0)
- audioBooks (0)
- Notes (0)
- Other Content Sources (0)
- Persistent Links to Searches (0)
- Saved Searches (0)
- Search Alerts (0)
- Journal Alerts (0)
- Web Pages (0)

## Articles

1-10 of 10

Page: 1

Date Added ▾ Page Options ▾

Select / deselect all **Delete Items**

- 1. [Gum Chewing and Prolonged Postoperative Ileus: An Observational Retrospective Study Examining the Impact of an Evidence-Based Practice Change.](#)



Academic Journal

(includes abstract) Chan, Linda; MEDSURG Nursing, Nov/Dec2019; 28(6): 387-391. 5p. (Article - research, tables/charts) ISSN: 1092-0811, Database: CINAHL Complete

An observational retrospective study which explored the sustainability of an evidence-based practice (EBP) project implementing a gum chew intervention after abdominal surgery, is presented. Topi...

**Subjects:** Chewing Gum Therapeutic Use; Intestinal Obstruction; Postoperative Complications Prevention and Control; Abdomen Surgery



Print



E-mail



Save as File



Export



点击文件夹查看保存的文章,可批量选中文章,进行打印、发送电子邮件、保存或导出,可以通过单击“登录”链接,然后免费创建个性化的“我的EBSCOhost”文件夹帐户来永久保存文件夹内容。

# Welcome back

Don't have an account? [Sign up.](#)

 Continue with Google

Or continue with username/email

Username or email address

kaishi

Password

Show

.....

[Forgot your password?](#)

Sign in



Kaishi's Folder ?  
◀ Back

- My Folder
- Articles (178)
- Images (0)
- Videos (0)
- Companies (0)
- Pages (0)
- eBooks (2)
- audioBooks (0)
- Checkouts (0)
- Holds (0)
- Notes (0)
- Other Content Sources (0)
- Persistent Links to Searches (7)
- Saved Searches (0)
- Search Alerts (2)
- Journal Alerts (2)
- Web Pages (0)
- My Custom ?
- educaton
- Shared By ? Add

## My Folder: Articles

1-10 of 178

Page: 1 2 3 4 5 Next ▶

Date Added ▾ Page Options ▾

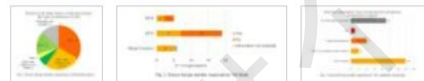
Select / deselect all

### 1. Open Access policies and Science Europe: State of play.



By: Crowfoot, Amanda. Information Services & Use. 2017, Vol. 37 Issue 3, p271-274. 4p. DOI: 10.3233/ISU-170839. , Database: Education Research Complete  
Increasing Open Access policy alignment may be observed among the members of Science Europe. Members typically have a mandatory policy that supports both the gold and the green road to open acces...

**Subjects:** Electronic publishing; Scholarly publishing; Open access publishing; Science publishing; Publishing



PDF Full Text (150KB)

### 2. Ultimate Crochet Bible: A Complete Reference with Step-by-Step Techniques.



By: Donohue, Nanette. Library Journal. 2/1/2011, Vol. 136 Issue 2, p68-68. 1/8p. , Database: Education Research Complete  
The article reviews the book "Ultimate Crochet Bible: A Complete Reference with Step-by-Step Techniques," by Jane Crowfoot.

Print

E-mail

Save as File

Export

登录my EBSCOhost 文件夹后，您可长期保存存在里面的内容，可按分类列表查看创建检索快讯，有新文章出现后可收邮件查看。



Searching: **CINAHL Complete** | [Choose Databases](#)

S9 AND S10 AND S11

Select a Field (optional) ▾

AND ▾

Select a Field (optional) ▾

AND ▾

Select a Field (optional) ▾

Search

Clear ?

[Basic Search](#) [Advanced Search](#) [Search History](#) ▶

### Refine Results

#### Current Search

Find all my search terms:

S9 AND S10 AND S11

#### Expanders

Apply equivalent subjects

#### Limit To

Full Text

Search Results: 1 - 10 of 75

### 1. **Gum Chewing** and Prolonged **Postoperative Ileus**: An Observational Study Examining the Impact of an Evidence-Based Practice Change.



Academic Journal

(includes abstract) Chan, Linda; MEDSURG Nursing, Nov/Dec2019; 28(6): 387-391. 5p. (Art 0811

An observational retrospective study which explored the sustainability of an evidence-based chew intervention after **abdominal surgery**, is presented. Topi...

**Subjects:** Chewing Gum Therapeutic Use; Intestinal Obstruction; Postoperative Complic Surgery



Relevance ▾ Page Options ▾ Share ▾

#### Add to folder :

Results (1-10)

Add search to folder:  
S9 AND S10 AND S11

#### Create an alert :

E-mail Alert

RSS Feed

#### Use Permalink :

Persistent link to search (copy & paste)

`http://search.ebscohost.com/login.aspx?`

### Folder has items

- The Impact of Sham Feedin...
- The use of chewing gum fo...
- Multimodal interventions ...

Go to: [Folder View](#)

创建检索快讯，有新文章出现后可收邮件查看。完成检索并登录个人文件夹账户后，您可以点击结果列表上方的共享按钮，然后在下拉列表中选择“电子邮件快讯”。

## Create Alert

Search Alert: "S9 AND S10 AND S11 Apply equivalent subjects on 2021-07-12 08:05 AM"

### E-mail

#### Subject

#### Hide addresses from recipients

#### E-mail from

### E-mail format

Plain Text  HTML

#### E-mail to

 Separate each e-mail address with a semicolon. Leave E-mail to field blank if you do not wish to receive e-mail alerts.

### General Settings

#### Frequency

#### Articles published within the last

#### Results format

### RSS Feed

<http://rss.ebscohost.com/AlertSyndicationService/Syndication.aspx/GetFeed?guid=6811930>

[Advanced Settings](#)

在创建检索提醒页面设置提醒频率和结果格式完成设置。输入您用于接收提醒的邮箱地址，然后点击保存提醒。如果您想查看所有可用的检索提醒个性化设置，请点击页面底部的高级设置。

- My Folder
  - Articles (178)
  - Images (0)
  - Videos (0)
  - Companies (0)
  - Pages (0)
  - eBooks (2)
  - audioBooks (0)
  - Checkouts (0)
  - Holds (0)
  - Notes (0)
  - Other Content Sources (0)
  - Persistent Links to Searches (7)
  - Saved Searches (0)
  - Search Alerts (2)**
  - Journal Alerts (2)
  - Web Pages (0)

- My Custom ? New
  - educaton
- Shared By ? Add

### My Folder: Search Alerts

1-2 of 2

Page: 1

Date Added Page Options

Select / deselect all **Delete Items** **Move To**

1. covid-19 AND DT 120 AND SU ( econom\* OR financ\* OR "international trade" OR business OR marketing OR commerce ) AND FM T 全文 AND 应用对等科目 on 2021-05-25 07:22 AM  
 Save Search/Alert to be run Once a day against SocINDEX with Full Text, EconLit with Full Text, OmniFile Full Text Select (H.W. Wilson), Book Review Digest Plus (H.W. Wilson), eBook Collection (EBSCOhost) databases. Send Plain Text formatted e-mail to cwang@ebSCO.com.

Alert Feed Retrieve Alert Edit Alert

07/12/2021  
 07/11/2021  
 07/10/2021  
 07/09/2021  
 07/08/2021

在文件夹中查看已创建的检索快讯

2. S9 AND S10 AND S11 Apply equivalent subjects on 2021-07-12 08:05 AM  
 Save Search/Alert to be run Once a day against CINAHL Complete database. Send Plain Text formatted e-mail to cwang@ebSCO.com.

Alert Feed Retrieve Alert Edit Alert

# 出版物检索 设定期刊提醒



MY

Searching: **CINAHL Complete** | [Choose Databases](#)

Search

[Basic Search](#) [Advanced Search](#) [Search History](#)

## Publications

Browsing: **CINAHL Complete -- Publications**

Browse

 Alphabetical  By Subject & Description  Match Any WordsPage: Previous [Next](#) ▶ ◀ [A](#) [B](#) [C](#) [D](#) [E](#) [F](#) [G](#) [H](#) [I](#) [J](#) [K](#) [L](#) [M](#) [N](#) [O](#) [P](#) [Q](#) [R](#) [S](#) [T](#) [U](#) [V](#) [W](#) [X](#) [Y](#) [Z](#) ▶Mark Items for Search 

-  [British Journal Of Nursing](#)  
Bibliographic Records: 04/23/1992 To Present  
Full Text: 04/23/1992 To Present  
 PDF Full Text;  HTML Full Text
-  [British Journal Of Nursing \(Great Britain\)](#)  
Bibliographic Records: Selective Coverage From 1951 To 1956
-  [British Journal Of Nutrition](#)  
Bibliographic Records: 01/01/1996 To Present

首先，单击顶部工具栏上的“出版物”按钮。在“浏览出版物（**Browse Publications**）”输入框中输入期刊名称，然后单击“浏览（**Browse**）”。接下来，单击标题链接以查看期刊详细信息页面。



Database: CINAHL Complete -- Publications

[Back](#)

### Publications

[Previous Record](#) [Next Record](#)

[Search within this publication](#)

## Publication Details For "British Journal of Nursing"

**Title:** British Journal of Nursing

**ISSN:** 0966-0461

**Publisher Information:** Mark Allen Holdings Limited  
St. Jude's Church  
Dulwich Road-Herne Hill  
London SE24 9BY  
United Kingdom of Great Britain & Northern Ireland

**Bibliographic Records:** 04/23/1992 to present

**Full Text:** [04/23/1992 to present](#)

**Publication Type:** Academic Journal

**Subjects:** Nursing

**Description:** Presents the latest developments in clinical and practice-based nursing.

**Publisher URL:** <http://www.markallengroup.com/ma-healthcare/>

**Frequency:** 22

**Peer Reviewed:** Yes

**Create an alert :**

[E-mail Alert](#) [RSS Feed](#)

---

**Use Permalink :**

Persistent link to search (copy & paste)

<http://search.ebscohost.com/login.aspx>

+ 2017

+ 2016

+ 2015

+ 2014

+ 2013

+ 2012

+ 2011

+ 2010

+ 2009

+ 2008

+ 2007

+ 2006

在期刊详细记录页面上，可查看不同年份，不同卷期下的文章，可以仅在此出版物中查找资料单击右上角的“共享（Share）”。在下拉菜单中，单击“电子邮件提醒（E-mail Alert）”以打开期刊提醒设置窗口。



Searching: **CINAHL Complete** | [Choose Databases](#)

JN "British Journal of Nursing" Select a Field (optional) ▾

AND ▾ COVID-19 Select a Field (optional) ▾

AND ▾ Select a Field (optional) ▾

**Search**

[Clear](#) ?

[Basic Search](#) [Advanced Search](#) [Search History](#) ▶

### Refine Results

#### Current Search ▾

Find all my search terms:

JN "British Journal of Nursing" AND COVID-19

#### Expanders

Apply equivalent subjects

#### Limit To ▾

Search Results: 1 - 10 of 186

Relevance ▾ Page Options ▾ Share ▾

### 1. Supporting recovery from **COVID-19**.



Academic Journal

(includes abstract) Alexandra Barley, Elizabeth; Coghlan, Beverly; **British Journal of Nursing**, 11/26/2020; 29(21): 1272-1276. 5p. (Article) ISSN: 0966-0461

**COVID-19** is a new disease. Most research into the disease has focused on prevention of viral spread and treatment, but little is known about how patients recover. Nurses, whether in hospital, the...

**Subjects:** Recovery; **COVID-19**; Nursing Role; Support, Psychosocial

[Cited References: \(45\)](#)

[HTML Full Text](#) [PDF Full Text](#)

### Folder has items

- The Impact of Sham Feedin...
- The use of chewing gum fo...
- Multimodal interventions ...

Go to: [Folder View](#)

点击“在出版物内搜索”后生成该刊相应的公式，点击“搜索”即可查看刊内所有文章或进行刊内检索

基于实证的护理指南Evidence-based care sheets  
快速教学Quick Lessons

New Search

Subjects ▾

Publications ▾

Images ▾

Evidence-Based Care Sheets

More ▾

Sign Out



Database: CINAHL Complete -- Evidence-Based Care Sheets

选择循证护理说明，  
输入关键词，点击浏览，  
找到相关内容

### Subjects

Browsing: CINAHL Complete -- Evidence-Based Care Sheets

asthma

Browse

Alphabetical  Relevancy Ranked

Page: Previous Next ▶

Select one or more items and click

Search

选择目标关键词后，  
点击search



Asthma: Management In Older Adults



Avian Influenza

#### 出版物类型

Editorial  
Equations & Formulas  
Evidence-Based Care Sheet  
Exam Questions  
Forms

## 精确搜索结果

### 当前检索

#### 布尔逻辑/词组:

(EV "Asthma:  
Management in Older  
Adults")

限于

检索结果: 1 - 1 (共 1 个)

最近日期 ▾

页面选项 ▾

共享 ▾

### 1. Asthma: Management in Older Adults



Evidence-  
Based Care  
Sheet

Caple, Carita; Cabrera, Gilberto; Pravikoff, Diane; *In*: CINAHL Nursing Guide; 2018 Feb 02; (Evidence-Based Care Sheet - CEU), 数据库: CINAHL Complete  
CE Module: [Asthma: Management in Older Adults--CE Module](#)

科目: Asthma Drug Therapy; Asthma Epidemiology; [Asthma Nursing](#); Asthma Symptoms; Asthma Therapy

 [PDF 全文](#)

点击查看PDF全文

« 结果列表 精确检索 下载 PDF 登录 文件夹 帮助

EBSCOhost Asthma: Management in Older Adults

**EVIDENCE-BASED CARE** Asthma: Management in Older Adults

« 结果列表 精确检索 下载 PDF 登录 文件夹 帮助

EBSCOhost Asthma: Management in Older Adults

and permanently decreased lung function after having the flu or pneumonia  
 › For more information regarding asthma, see the series of related *Quick Lessons* and *Evidence-Based Care Sheets*

**What We Can Do**

« 结果列表 精确检索 下载 PDF 登录 文件夹 帮助

EBSCOhost Asthma: Management in Older Adults

详细记录

PDF 全文

来源: CINAHL Nursing Guide  
日期: May 13, 2016

在此作品中

▼ 全文内容

1 - 5 | 6 - 10 | 11 - 15 | >>

Asthma: Management i...

Patient Abuse

Prostate Cancer: Tre...

Osteoporosis in Men

Congenital Diaphragm...

**Coding Matrix**  
References are rated using the following codes, listed in order of strength:

<b>M</b> Published meta-analysis	<b>RV</b> Published review of the literature	<b>PP</b> Policies, procedures, protocols
<b>SR</b> Published systematic or integrative literature review	<b>RU</b> Published research utilization report	<b>X</b> Practice exemplars, stories, opinions
<b>RCT</b> Published research (randomized controlled trial)	<b>QI</b> Published quality improvement report	<b>GI</b> General or background information/texts/reports
<b>R</b> Published research (not randomized controlled trial)	<b>L</b> Legislation	<b>U</b> Unpublished research, reviews, poster presentations or other such materials
<b>C</b> Case histories, case studies	<b>PGR</b> Published government report	<b>CP</b> Conference proceedings, abstracts, presentation
<b>G</b> Published guidelines	<b>PFR</b> Published funded report	

**References**

1. Akgün, K. M., Crothers, K., & Pisani, M. (2012). Epidemiology and management of common pulmonary diseases in older persons. *Journal of Gerontology: Biological Sciences*, 67(3), 276-291. (GI)
2. Al-Alawi, M., Hassan, T., & Chotirmall, S. H. (2014). Advances in the diagnosis and management of asthma in older adults. *American Journal of Medicine*, 127(5), 370-378. doi:10.1016/j.amjmed.2013.12.013 (RV)
3. Baptist, A. P., Ross, J. A., Yang, Y., Song, P. X. K., & Clark, N. M. (2013). A randomized controlled trial of a self-regulation intervention for older adults with asthma. *Journal of the American Geriatrics Society*, 61(5), 747-753. doi:10.1111/jgs.12218 (RCT)
4. Braman, S. S., & Abu-Hijleh, M. (2010). Asthma and chronic obstructive pulmonary disease. In H. M. Fillit, K. Rockwood, & K. Woodhouse (Eds.), *Brocklehurst's textbook of geriatric medicine and gerontology* (7th ed., pp. 362-369). Philadelphia, PA: Saunders Elsevier. (GI)
5. Busse, P. J., Cohn, R. D., Salo, P. M., & Zeldin, D. C. (2013). Characteristics of allergic sensitization among asthmatic adults older than 55 years; results from the National Health and Nutrition Examination Survey, 2005-2006. *Annals of Allergy, Asthma and Immunology*, 110(4), 247-252. (R)
6. Busse, P. J., & Kilaru, K. (2009). Complexities of diagnosis and treatment of allergic respiratory disease in the elderly. *Drugs and Aging*, 26(1), 1-22. doi:10.2165/0002512-200926010-00001 (RV)
7. Carnegie, E., & Jones, A. (2013). Improving the management of asthma in older adults. *Nursing Standard*, 28(13), 50-58. doi:10.7748/ns.2013.11.28.13.50.e8075 (RV)
8. Chotirmall, S. H., Watts, M., Branagan, P., Donegan, C. F., Moore, A., & McElvaney, N. G. (2009). Diagnosis and management of asthma in older adults. *Journal of the American Geriatrics Society*, 57(5), 901-909. doi:10.1111/j.1532-5415.2009.02216.x (RV)
9. Epstein, T. G., Ryan, P. H., LeMasters, G. K., Bernstein, C. K., Levin, L. S., Bernstein, J. A., ... Bernstein, D. I. (2012). Poor asthma control and exposure to traffic pollutants and obesity in older adults. *Annals of Allergy, Asthma & Immunology*, 108(6), 423-428. doi:10.1016/j.anai.2012.04.009 (R)
10. Ferderman, A. D., Wolf, M., Sofianou, A., Wilson, F. A. H., Martynenko, M., Halm, E. A., ... Wisniewsky, J. P. (2013). The association of health literacy with illness and medication



Database: CINAHL Complete -- Quick Lessons

出版物类型

- Questions and Answers
- Quick Lesson
- Randomized Controlled Trial
- Research
- Research Instrument

Subjects

Browsing: CINAHL Complete -- Quick Lessons

breast cancer

Alphabetical  Relevancy Ranked

Page: [◀ Previous](#) [Next ▶](#)

Select one or more items and click

- Breast Cancer
- Breast Cancer: Prevention
- Bronchoconstriction, Exercise-Induced
- Bulimia Nervosa
- Cardiac Tamponade
- Carotid Sinus Syndrome





Searching: CINAHL Complete | Choose Databases

(QL "Breast Cancer") Select a Field (optional) ▾

AND ▾ Select a Field (optional) ▾

AND ▾ Select a Field (optional) ▾

Search

Clear ?

Basic Search Advanced Search Search History

### Refine Results

#### Current Search

Find all my search terms:

(QL "Breast Cancer")

#### Expanders

Apply equivalent subjects

Limit To

Search Results: 1 - 1 of 1

Relevance ▾ Page Options ▾ Share ▾

### 1. Breast Cancer



Quick Lesson

Mennella, Hillary; Holle, Morgan Nicole; Pravikoff, Diane; In: CINAHL Nursing Guide; 2018 Oct 05; (Quick Lesson - CEU) CE Module: Breast Cancer--GE Module

Subjects: Breast Neoplasms Classification; Breast Neoplasms Diagnosis; Breast Neoplasms Epidemiology; Breast Neoplasms Risk Factors; Breast Neoplasms Symptoms; Breast Neoplasms Therapy

PDF Full Text

Page: 1

#### Folder has items

- The Impact of Sham Feedin...
- The use of chewing gum fo...
- Multimodal interventions ...

Go to: Folder View

可以查看与Brest Cancer相关的病因，诊断，治疗等内容

The screenshot shows the EBSCOhost interface. At the top, there is a blue navigation bar with links for « 结果列表, 精确检索, 下载 PDF, 登录, 文件夹, and 帮助. The main content area is titled 'Breast Cancer' and features a 'QUICK LESSON' section. The 'Description/Etiology' section provides detailed information about breast cancer, including its classification, subtypes, and risk factors. A callout box points to the 'Breast Cancer' title, indicating that users can view related content such as causes, diagnosis, and treatment. On the left side, there is a sidebar with a search history and a list of related topics, including 'Breast Cancer', 'Hand-Foot-Mouth Disease', and 'Whooping Cough: Thre...'. The bottom of the page shows the ICD-9 code for breast cancer.

« 结果列表 精确检索 下载 PDF 登录 文件夹 帮助

EBSCOhost

详细记录

PDF 全文

来源: CINAHL Nursing Guide

日期: April 15, 2016

在此作品中

▼ 全文内容

1 - 5 | 6 - 10 | 11 - 12

Appendectomy

**Breast Cancer**

Hand-Foot-Mouth Disease

Whooping Cough: Thre...

Congenital Syphilis

Breast Cancer

**QUICK LESSON**

**Breast Cancer**

**Description/Etiology**

Breast cancer (BC), a group of diseases characterized by the development of malignant tumors in the breast tissue, is classified at diagnosis as noninvasive (e.g., ductal or lobular carcinoma in situ) or invasive (e.g., infiltrating ductal or lobular carcinoma). Subtypes of invasive BC include medullary, mucinous, tubular ductal, inflammatory, and Paget's disease. Most cases of BC originate from the ducts and are invasive. (For more information regarding BC, see the series of related *Quick Lessons* and *Evidence-Based Care Sheets*).

The etiology of BC is unknown. Although it is believed that estrogen is associated with the development of BC in some cases, it is not considered causal. BC is usually detected with a screening mammogram or when a patient seeks medical attention for a palpable breast mass. Mammogram, ultrasonography, and breast MRI can visualize and characterize the mass, while histologic analysis of a biopsy sample (usually obtained via stereotactic core needle biopsy) is needed for accurate diagnosis, staging, and treatment planning. Factors that significantly affect prognosis include lump size, axillary node involvement, tumor differentiation, DNA content, estrogen and progesterone receptor status, and human epidermal growth factor 2 (HER2) receptor status. Prognosis is also influenced by patient age, time since BC diagnosis, stage of tumor at diagnosis, the presence of comorbid illness, race/ethnicity, and socioeconomic factors. The most significant complication of BC is metastasis, which can be local, regional, or distant. Metastasis usually occurs through the lymphatic system and is considered treatable but in most cases is incurable. BC recurs in more than half of patients with invasive disease despite successful initial therapy. BC

ICD-9

### 第三部分 支持站点及免费教程

检索平台：<https://search.ebscohost.com/>（校园IP网络范围内）

EBSCO 支持站点：<https://connect.ebsco.com>

EBSCO官网：<https://www.ebsco.com/>

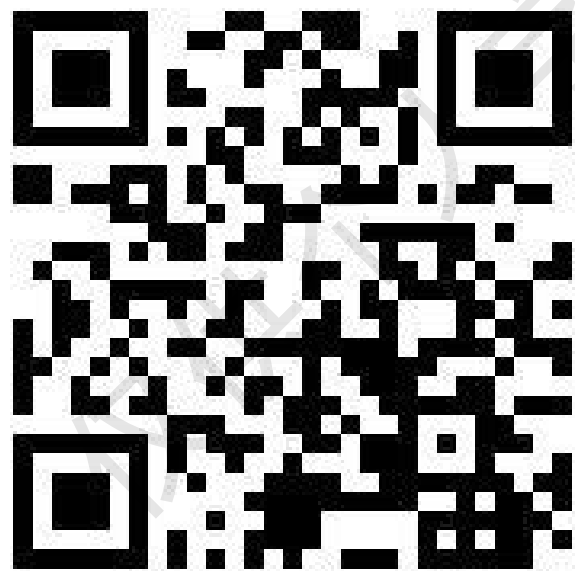
线上公开课程：<https://ebsco-chinese.zoom.us/calendar/list?showType=2>

EBSCOhost 中文教程下载：

<https://connect.ebsco.com/s/article/EBSCO平台中文使用指南>

# 第一波抽奖

请扫描下方二维码，按照提示下载文章并上传  
问卷链接：<https://www.wjx.cn/vm/wOlpHXm.aspx#>



抽奖



填写课程反馈有机会获取价值100元的奖品

该课程介绍的产品：EBSCOhost-General

本节课程讲师：王成芳

EBSCO官方微信



Thank You!

欢迎定制培训课程及试用EBSCO数据库

访问更多信息参见<https://connect.ebsco.com/>

邮箱: [cwang@ebsco.com](mailto:cwang@ebsco.com)

**EBSCO**